

NT 22/1 AP L

Compact yet unbelievably powerful wet and dry vacuum cleaner entry-level unit. Due to its low weight, the NT 22/1 Ap is ideal for mobile use.



Order no. 1.378-600.0

- Efficient semi-automatic filter cleaning
- Suction hose port in the head of the machine
- Moisture-resistant PES cartridge filter

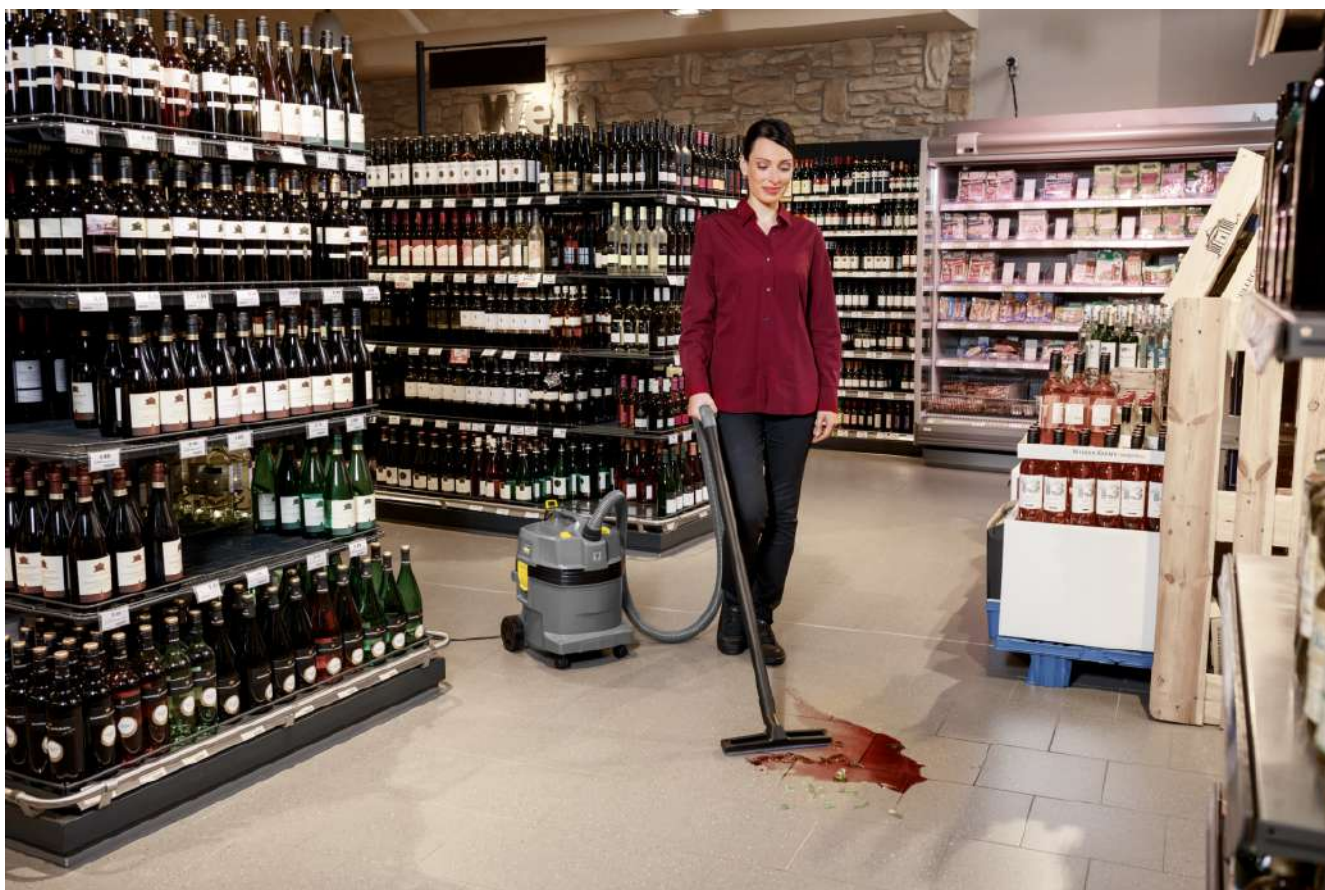
Technical data

EAN code		4054278287928
Supply voltage	Ph / V / Hz	1 / 220 - 240 / 50 - 60
Air flow	l/s	72
Vacuum	mbar / kPa	249 / 24.9
Container content	l	22
Container material		Plastic
Rated input power	W	max. 1300
Standard nominal width		ID 35
Cable length	m	6
Sound pressure level	dB(A)	71
Colour		anthracite
Weight without accessories	kg	5.7
Weight incl. packaging	kg	8.2
Dimensions (L × W × H)	mm	380 × 370 × 480

Equipment

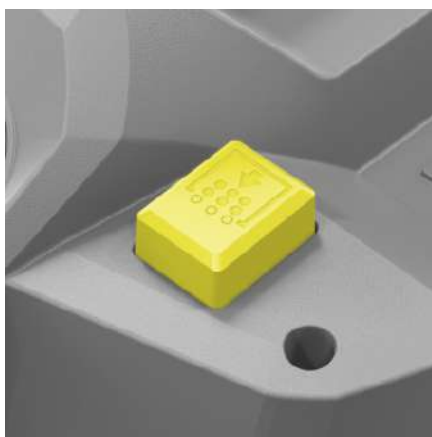
Suction hose	m	1.9
Bend		Plastic
Quantity of suction tubes	Piece(s)	2
Suction tubes length	mm	505
Suction tubes material		Plastic
Filter bag	Piece(s)	1 / Fleece
Wet/dry floor nozzle	mm	300
Crevice nozzle		■
Cartridge filter		PES
Filter cleaning		Semi-automatic filter cleaning Ap
Protection class		II
Stop swivel castor		■

■ Included in the scope of supply.



Low weight and compact dimensions

- The machine can be easily and conveniently transported and stored.



Semi-automatic filter cleaning

- Semi-automatic filter cleaning effectively ensures constant high suction power.



Moisture-resistant PES cartridge filter

- It is possible to change from wet to dry vacuum cleaning easily without having to dry the PES cartridge filter first.
- Washable PES filter.

ACCESSORIES FOR NT 22/1 AP L 1.378-600.0



		Order no.	Description	
CARTRIDGE FILTER, STANDARD, UP TO BIA C, DUST CLASS M				
Cartridge filter PES				
Cartridge filter PES, suitable for NT 22/1 Ap, 27/1, 48/1	1	2.889-219.0	Moisture-resistant PES cartridge filter for wet and dry vacuum cleaning. Dust class L-certified.	■
BENDS				
Bend, plastic				
Bend, NT, DN 35, plastic, clip 2.0 at hose end, cone at accessory end	2	2.889-199.0	DN 35 plastic bend for wet and dry vacuum cleaners. Equipped with a clip 2.0 connection at the hose end and a cone connection at the accessory end.	■
Bend with air-flow regulator, T, DN 35, plastic, antistatic, clip 2.0 at hose end, cone at accessory end	3	2.889-148.0	Antistatic, ergonomic bends with air-flow regulator in size DN 35 for dry vacuum cleaners. Equipped with a clip 2.0 connection at the hose end and a cone connection at the accessory end.	□
Bend, NT, DN 35, plastic, electrically conductive, clip 2.0 at hose end, cone at accessory end	4	2.889-168.0	Electrically conductive, ergonomic plastic bend in size DN 35 for wet and dry vacuum cleaners. Equipped with a clip 2.0 connection at the hose end and a cone connection at the accessory end.	□
Bend, NT, DN 35, plastic, clip 2.0 at hose end, cone at accessory end	5	2.889-170.0	Ergonomic DN 35 plastic bend for wet and dry vacuum cleaners. Equipped with a clip 2.0 connection at the hose end and a cone connection at the accessory end.	□
SUCTION NOZZLES				
Floor nozzles				
Wet/dry floor nozzle, DN 35, width 300 mm, with parking hook	6	2.899-811.0	Plastic wet/dry floor nozzle with parking hook, brush strips and squeegees in DN 35. For wet and dry vacuuming of fine dust, coarse dirt or liquids. Width of 300 mm.	■
Wet/dry floor nozzle, Adv, DN 35, width 360 mm	7	2.889-152.0	For wet/dry cleaning: plastic Adv floor nozzle with width of 360 mm and nominal size of DN 35. Includes brush strips and squeegees that are easy to change.	□
Crevice nozzles				
Crevice nozzle, DN 35, plastic, 225 mm	8	2.889-159.0	Crevice nozzle with nominal width DN 35 for Kärcher dry vacuum cleaners and wet and dry vacuum cleaners. Length 225 mm.	■
Car cleaning nozzles				
Ergonomic car nozzle, ID 35, 100 mm	9	2.889-356.0	Ergonomic and compact DN 35 car cleaning nozzle made from plastic with a working width of 100 mm for vehicle interior cleaning. Suitable for all wet and dry vacuum cleaners with DN 35 bends.	□
Car nozzle, ID 35, 90 mm	10	6.906-108.0	Flat angled, convenient, plastic, DN 35 car cleaning nozzle designed for all Kärcher wet and dry vacuum cleaners with bends. Working width: Approx. 90 mm.	□
Rubber suction tools, nose 45°				
Rubber suction tool, nose 45°	11	6.902-104.0	45° rubber suction nozzle (DN 35), oil-resistant and suitable for vacuuming machines. Only for NT vacuum cleaners.	□
NT rubber suction nozzle, bevelled at 45°, DN 40	12	6.902-105.0	45° rubber suction nozzle (DN 40), oil-resistant and suitable for vacuuming machines. Only for NT vacuum cleaners.	□
SUCTION TUBES				
Suction tubes, plastic				
Suction tube, 2 x, HV and NT, DN 35, 505 mm long, plastic, suitable for: HV 1/1 Bp, NT 22/1, NT 27/1, NT 48/1, ProNT 600 L	13	2.889-218.0	The suction tube set consists of 2 suction tubes made of high-quality plastic (DN 35 and 505 mm long each). For the HV 1/1 Bp battery-powered hand vacuum cleaner as well as wet and dry vacuum cleaners from Kärcher.	■
Suction tubes, metal				
Suction tube, DN 35, 505 mm long, chrome-plated steel, suitable for: T 7/1, T 10/1, T 12/1, NT 22/1, NT 30/1, NT 40/1, NT 50/1, NT 65/2	14	6.902-074.0	Chrome-plated steel suction tube for Kärcher dry vacuum cleaners and wet and dry vacuum cleaners, nominal width DN 35 and 505 mm long.	□

■ Included in the scope of supply. □ Available accessories.

ACCESSORIES FOR NT 22/1 AP L 1.378-600.0



		Order no.	Description	
FILTER BAGS				
Fleece filter bags				
Fleece filter bags, 5 Piece(s), NT 22/1	15	2.889-217.0	Tear-resistant 3-layer fleece filter bags of dust class L, suitable for Kärcher wet and dry vacuum cleaners. Contents: 5-pack.	<input type="checkbox"/>
SUCTION HOSES				
Suction hoses with clip system 2.0 (compatible with vacuum cleaners from model year 2017 on)				
Suction hose, NT, DN 35, length 2.5 m, clip 2.0, bayonet 2.0	16	2.889-134.0	The suction hose in nominal width DN 35 and with 2.5 m length is suitable for use with wet and dry vacuum cleaners from Kärcher.	<input type="checkbox"/>
Suction hose, NT, DN 35, length 2.5 m, electrically conductive, clip 2.0, bayonet 2.0	17	2.889-136.0	The electrically conductive suction hose in nominal width DN 35 and with 2.5 m length is suitable for use with wet and dry vacuum cleaners.	<input type="checkbox"/>
Extension hose, T and NT, DN 35, length 2.5 m, clip 2.0, connecting adapter	18	2.889-145.0	The extension hose in nominal width DN 35 and with 2.5 m length is suitable for use with wet and dry vacuum cleaners and dry vacuum cleaners from Kärcher.	<input type="checkbox"/>
CONNECTING SLEEVES				
Connection adapter C ID (clip to cone)				
Adapter clip DN 35 on cone DN 35	19	5.407-005.0	Adapter clip system DN 35 for connecting suction tubes and small nozzles to cone DN 35. Perfect for vehicle interior cleaning, even without the connection of other nozzles.	<input type="checkbox"/>
Connection adapter for power tools, clip connection				
Tool adapter for power tools, DN 35, clip 2.0	20	2.889-151.0	Tool adapter with rubber attachment and false air rotating ring suitable for regulating suction power when working with power tools. Compatible with suction hoses with clip 2.0 connection in DN 35.	<input type="checkbox"/>
Adapter for electric power tools, screwable				
Attachment rubber sleeve	21	5.303-877.0	Rubber tool socket for screwing onto the suction hose.	<input type="checkbox"/>
OTHER ACCESSORIES NT				
Drilling dust nozzle	22	2.679-000.0	Drilling dust nozzle for dust-free vacuuming of boreholes. Suitable for dry and wet and dry vacuum cleaners from Kärcher.	<input type="checkbox"/>
Adapter clip new on clip old DN 35	23	2.889-312.0	Adapter for connection of hoses of the new accessory system of dry and wet and dry vacuum cleaners to bends or extension hoses of the old system. For nominal width DN 35.	<input type="checkbox"/>
Adapter for NT hoses with bayonet connection 1.0	24	5.031-436.0	Electroconductive adapter for connecting NT hoses with bayonet 1.0 connection of nominal widths DN 35, 40, 50 to the new accessory system for wet and dry vacuum cleaners from Kärcher.	<input type="checkbox"/>

■ Included in the scope of supply. □ Available accessories.