

SE 3 Compact Home

English
العربية

5
15



**Register
your product**
www.kaercher.com/welcome

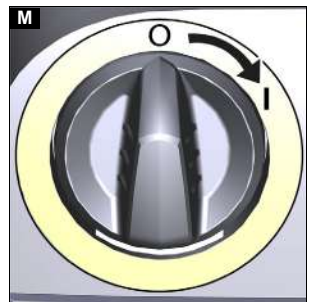
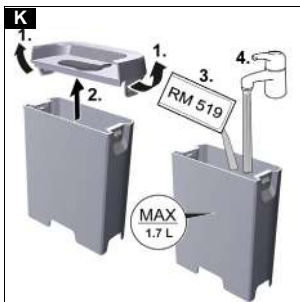
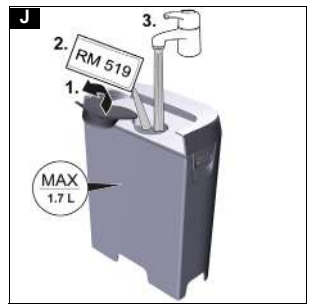
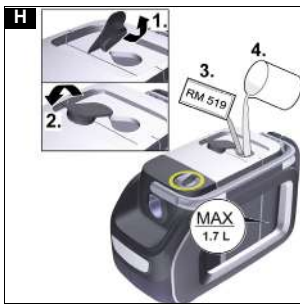
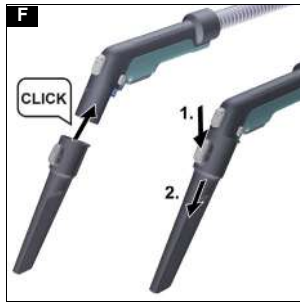
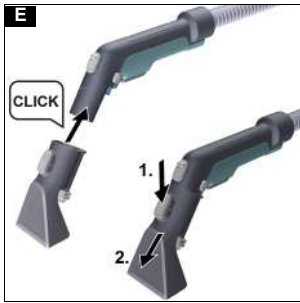
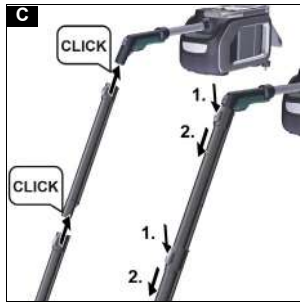
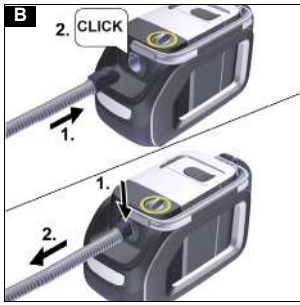


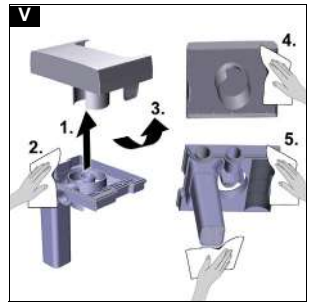
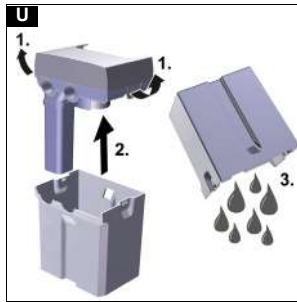
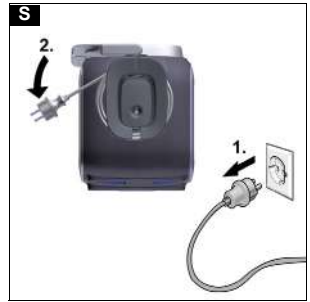
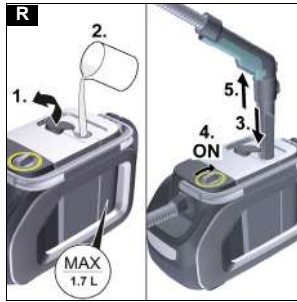
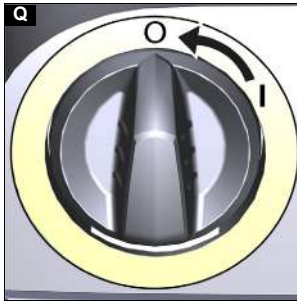
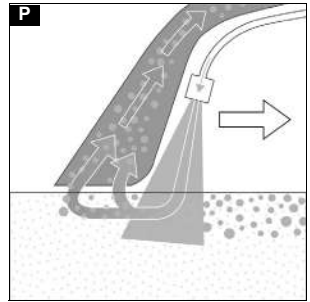
59512700

(06/24)

A







Contents

Safety instructions	5
Intended use	6
Environmental protection	6
Customer Service department	6
Accessories and spare parts	6
Scope of delivery	6
Warranty	7
Symbols on the device	7
Device description	7
Initial startup	7
Operation	8
Transport	9
Care and service	9
Troubleshooting guide	10
Technical data	10

Safety instructions



Read this safety chapter and these original instructions before using the device for the first time. Act in accordance with them. Keep the original instructions for future reference or for future owners.

- In addition to the notes in the operating instructions, you also need to take into consideration the general safety regulations and accident prevention guidelines applicable by law.
- Warnings and information notices attached to the device provide important information for hazard-free operation.

Hazard levels

⚠ DANGER

- Indication of an imminent threat of danger that will lead to severe injuries or even death.

⚠ WARNING

- Indication of a potentially dangerous situation that may lead to severe injuries or even death.

⚠ CAUTION

- Indication of a potentially dangerous situation that may lead to minor injuries.

ATTENTION

- Indication of a potentially dangerous situation that may lead to damage to property.

Protective gear

- ⚠ **CAUTION** • Wear suitable gloves when working with the device.

General safety instructions

- ⚠ **DANGER** • Risk of asphyxiation. Keep packaging film out of the reach of children.

- ⚠ **WARNING** • Only use the device for its proper use. Take into account the local conditions and beware of third parties, in particular children, when working with the device. • Persons with reduced physical, sensory or mental capabilities and persons lacking experience and knowledge may only use the appliance if they are properly supervised, have been instructed on use of the appliance safely by a person responsible for their safety, and understand the resultant hazards involved. • Only people who have been instructed on how to use the device, or have proven their ability to operate it, and have

been explicitly instructed to use it, must use the device. • Children must not operate the device. • Children must be supervised to prevent them from playing with the appliance.

- ⚠ **CAUTION** • Safety devices are provided for your own protection. Never modify or bypass safety devices.

Risk of electric shock

- ⚠ **DANGER** • Only connect the device to alternating current. The voltage indicated on the type plate must match the voltage of the power source. • Never touch the mains plug and socket with wet hands. • Only operate the device via a fault current protection switch (maximum 30 mA). • Never immerse the device, mains cable or mains plug in water or other liquids.

- ⚠ **WARNING** • Only work with liquids (e.g. cleaning agents) if the device is connected to a socket protected with a fault current protection switch (maximum 30 mA). • Only connect the device to an electrical connection which has been set up by a qualified electrician as per IEC 60364-1. • Switch off the device immediately in the event of leaks. • In case of any foam formation or escaping liquids, switch off the device immediately and remove the mains plug. • Check that the mains connection cable with mains plug is undamaged each time before using the device. To avoid any possible danger, a damaged mains connection cable must be immediately replaced by the manufacturer, or the authorised customer service department or a qualified electrician. • Do not damage the power supply and extension cable by running over it, crushing or yanking it or similar. Protect the power supply cable from heat, oil and sharp edges. • Unsuitable electrical extension cables can be dangerous. Only use electrical extension cables with a splash guard and a diameter of at least 3x1 mm². • Only use the mains connection cable prescribed by the manufacturer, including when replacing the cable. For order no. and type see operating instructions. • Only replace couplings on the power supply or extension cable with those with the same splash guard and the same mechanical strength. • Do not use the device if it has been dropped beforehand, has received an impact or is visibly damaged. Have the device checked by the authorised Customer Service and repaired properly before using the device again. Internal malfunctions could impair the safety of the device.

- ⚠ **CAUTION** • Switch off the device and unplug the mains plug before performing cleaning/maintenance. • Have repair work and work on electrical components carried out by the authorised customer service only. • In case of longer breaks in operation and after use, switch off the device at the main switch / device switch and pull the mains plug. • Do not pull the mains plug out the socket using the power supply cable. • Do not carry/transport the device using the power supply cable.

Operation

- ⚠ **DANGER** • When using the device in hazard zones (e.g. service stations), adhere to the respective safety regulations. • Operation in explosive atmospheres is prohibited. • Never use the device to extract any burning or smouldering objects.

DANGER • Never spray or vacuum fluids, flammable gases, explosive dusts as well as undiluted acids and solvents. These include petrol, paint thinners or heating oil, which can form explosive vapours or mixtures through suction air turbulence, also acetone, undiluted acids and solvents because these attack the materials used in the machine. • Risk of explosion

- Never use the device to vacuum up combustible gases, liquids or dusts.
- Never use the device to vacuum up reactive metal dusts (e.g. aluminium, magnesium, zinc).
- Never use the device to vacuum up undiluted brine or acids.
- Never use the device to vacuum up any burning or smouldering objects/matter.

These substances can corrode the materials in use on the device.

⚠ WARNING • Never use the device to vacuum up people or animals. • Do not suck in toxic substances.

⚠ CAUTION • Check the device and the accessories each time before operation, in particular the mains connection and extension cable, to make sure it is safe and working correctly. Pull out the mains plug in case of any damage and do not use the device. • Never leave the device unattended when it is not switched off and with the mains plug or the battery pack removed. • Do not use the device if it has been dropped beforehand, has received an impact or is visibly damaged. Have any damage repaired correctly before using the device again. • The device is not suitable for sucking dust that is harmful to health. • The device must be placed on a firm subsurface.

ATTENTION • Use the socket on the device, if applicable, only for connecting accessories and attachments specified in the operating instructions. • The device is suitable for damp to wet floors up to a maximum water height of 1 cm. Do not drive into an area if there is a danger of exceeding the maximum water height. • The device is only suitable for use on the coats listed in the operating instructions. • Observe the legal regulations when disposing of waste water and brine. • Do not operate the device at temperatures below 0 °C. • Protect the device from rain and frost. Do not store the device outdoors. • Functional impairments. Do not suck in any substances that can harden in contact with water, such as plaster, cement, etc. • During operation, it is necessary to set the device down horizontally/level.

Operation with detergent

⚠ CAUTION • Keep the detergent out of the reach of children. • Never use the recommended detergents undiluted. These products are operationally safe since they do not contain any acids, alkali or substances that are harmful to the environment. Should detergents come into contact with eyes, rinse these out immediately and thoroughly using water and seek medical attention immediately. The same applies if detergents are swallowed. • Only use the detergents recommended by the manufacturer and observe the application, disposal and warning instructions of the detergent manufacturers.

Maintenance

⚠ WARNING • Prior to cleaning, maintenance and replacement of parts, the device needs to be

switched off and the mains plug or battery pack removed. Switch the device off before changing over to another function.

⚠ CAUTION • Repairs may only be carried out by approved customer service sites or staff qualified in this area who are familiar with all relevant safety instructions. • Clean the water level limit facility regularly, checking for any signs of damage.

ATTENTION • Short-circuits or other damage. Do not clean the device with a hose or high-pressure water jet. • Do not clean the device with scouring agents, glass cleaners or multi-purpose cleaners.

Accessories and spare parts

⚠ CAUTION

- Only use accessories and spare parts which are approved by the manufacturer. Only original accessories and original spare parts ensure that the appliance will run fault-free and safely.

Transport

⚠ CAUTION • Switch off the device prior to transport. Secure the device, taking into account its weight. See chapter Technical Data in the operating instructions.

Intended use

Only use the device in private households. The device is intended for use as a spray extraction cleaner for cleaning car interiors, upholstery textiles and carpets in accordance with the descriptions given in these operating instructions and the safety instructions.

Environmental protection



The packing materials can be recycled. Please dispose of packaging in accordance with the environmental regulations.



Electrical and electronic devices contain valuable, recyclable materials and often components such as batteries, rechargeable batteries or oil, which - if handled or disposed of incorrectly - can pose a potential danger to human health and the environment. However, these components are required for the correct operation of the device. Devices marked by this symbol are not allowed to be disposed of together with the household rubbish.

Notes on the content materials (REACH)

Current information on content materials can be found at: www.kaercher.de/REACH

Customer Service department

Our local KÄRCHER branch will be happy to help you if you have any questions or problems with the device.

Accessories and spare parts

Only use original accessories and original spare parts. They ensure that the appliance will run fault-free and safely.

Information on accessories and spare parts can be found at www.kaercher.com.

Scope of delivery

The scope of delivery for the appliance is shown on the packaging. Check the contents for completeness when unpacking. If any accessories are missing or in the event of any shipping damage, please notify your dealer.

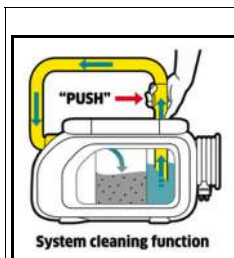
Warranty

The warranty conditions issued by our relevant sales company apply in all countries. We shall remedy possible malfunctions on your appliance within the warranty period free of cost, provided that a material or manufacturing flaw is the cause. In a warranty case, please contact your dealer (with the purchase receipt) or the next authorised customer service site.

(See overleaf for the address)

Further warranty information (if available) can be found in the service area of your local Kärcher website under "Downloads".

Symbols on the device



A symbol for system cleaning after use is present on the inside of the fresh water tank:

- Fill the fresh water tank with tap water. Then fully insert the crevice nozzle into the tank opening and switch on the device while simultaneously holding the spray lever pressed. See also chapter *Ending operation*

Device description

The device is equipped with different equipment depending on the model selected. The specific equipment is described on the device packaging.

For the figures, please refer to the graphics page.

Illustration A

- ① Spray suction hose connection
- ② Waste water tank with lid
- ③ Fresh water tank with lid
- ④ Holder for spray suction hose handle
- ⑤ Tank cap
- ⑥ Power switch (I (On) / O (Off))
- ⑦ Carrying handle
- ⑧ Storage for sponge, brush, detergent bag
- ⑨ Holder for mains cable and spray extraction floor nozzle
- ⑩ Mains cable
- ⑪ Spray suction hose and handle with spray lever and locking button
- ⑫ Spray extraction upholstery nozzle
- ⑬ Spray extraction crevice nozzle
- ⑭ * Spray suction tubes 2 x 0.5 m
- ⑮ * Spray extraction floor nozzle
- ⑯ Detergent RM 519 (100 ml)

* optional

Initial startup

Pre-cleaning

Note

As the device does not have a dry vacuum function, if necessary remove coarse-grained dirt (e.g. crumbs) with a commercially available vacuum cleaner before cleaning the textiles.

Connecting the spray suction hose

1. Press the spray suction hose into the suction hose connection on the device until it latches into place.
 - To remove, press the latch and pull the spray suction hose out.

Illustration C

2. Fit the accessory as required. See chapter *Installing accessories*.

Filling the fresh water tank

ATTENTION

Only switch on the device when the fresh water tank and waste water tank are installed.

ATTENTION

The fresh water and waste water tanks must be firmly seated in the device.

ATTENTION

The use of unsuitable detergents can damage the device and result in loss of eligibility for warranty claims.

Note

If necessary, use KÄRCHER RM 519 detergent for cleaning upholstery.

- Observe the manufacturer's dosing quantity recommendations when dosing with detergent.
- A dosage of approx. 100 ml of detergent is recommended per tank filling.
- Pour in the detergent and then fill up to "Max" with water.
- The total filling quantity is a maximum of 1.7 litres.

Note

The fresh water tank can be removed at any time for filling or be filled directly on the device.

Filling the water reservoir directly on the device

- 1 Pull the tank cap upwards and turn sideways. Dose the detergent according to the specifications and then fill the tank with tap water up to the "MAX" mark.

Illustration O

- 2 Close the tank cap.

Removing the water tank for filling

- 1 Pull out the water tank vertically upwards by the recessed grip.

Illustration Q

- 2 Pull the tank cap upwards, turn it sideways and fill the water tank with detergent and tap water up to the "MAX" mark.

Illustration S

or

Unlock the tank lid, remove it and fill with detergent and tap water up to the "MAX" mark.

Illustration U

- 3 Close the tank cap or fit the tank lid making sure that it is firmly seated.
- 4 Fit the water tank down to the bottom of the device.

Installing accessories

Carpet cleaning

Use the spray suction tube and the spray extraction floor nozzle for carpet cleaning.

- 1 Plug the spray suction tubes together and the connect to the spray suction hose; all parts must audibly latch into place
- 2 Push the spray extraction floor nozzle on to the spray suction tube until it audibly clicks into place.
- To separate the spray suction tubes and spray extraction floor nozzle, press the respective unlocking button and pull the parts from each other.

Illustration E

Illustration G

Upholstery cleaning

Use the spray extraction upholstery nozzle, spray extraction crevice nozzle or spray extraction floor nozzle for cleaning as required, e.g. for upholstery and mattresses.

- Push the spray extraction upholstery nozzle, spray extraction crevice nozzle or spray extraction floor nozzle on to the spray suction hose handle until it audibly clicks into place.
- To separate the spray extraction upholstery nozzle, spray extraction crevice nozzle or spray extraction floor nozzle, press the respective unlocking button and pull it off the spray suction hose.

Illustration I

Illustration K

Illustration M

Switching on the device

⚠ WARNING

Risk of electric shock

If the power cable is not completely unwound, the danger exists of you straining and damaging the mains cable by overestimating the range of the cable.

Always completely unwind the power cable.

1. Completely remove the power cable from the cable hook.
2. Plug the mains plug into a socket.

Illustration W

3. Turn the power switch to position I (On).

Illustration Y

Start the suction motor and pump.

4. Close the air damper completely.

Illustration AA

Operation

Cleaning carpets or upholstery

Note

Warm water (maximum 50 °C) increases the cleaning effect.

Note

Only use the RM 519 detergent from KÄRCHER for cleaning.

ATTENTION

Danger from cleaning solution

Risk of damage

Before using the device, check the object to be cleaned for colour fastness and water resistance in an inconspicuous place.

1. Fill the fresh water tank with detergent and water, see chapter *Filling the fresh water tank*.
2. Switch on the device, see Chapter *Switching on the device*

3. Select the accessory as required and press the lever on the handle to spray the cleaning solution.
4. To spray large areas, first press the lever on the handle and then press the locking button.

Illustration AC

5. Pull the spray extraction upholstery nozzle or spray extraction floor nozzle backwards over the surface to be cleaned in overlapping paths, do not push.

Illustration AE

Note

For faster and more effective work, the spray extraction floor nozzle can also be used for cleaning upholstery (e.g. large sofas).

Note

When the wastewater container is full, a float switch closes the suction opening and the device runs at a higher speed.

6. Switch off the device immediately and empty the waste water container, see chapter *Emptying the waste water tank*.

Cleaning methods

Light / Normal soiling

1. Turn the power switch to position I (On).

Illustration Y

Start the suction motor and pump.

2. Press the lever for spraying.
Cleaning solution is sprayed.

Illustration AC

3. Release the lever for spraying and suck up the cleaning solution residue.

If necessary, the air leakage slider can be adjusted to regulate the suction power.

Illustration AA

4. After cleaning, clean the upholstery and carpet with clear, warm water and impregnate if desired.

Heavily soiling or stains

1. Turn the power switch to position I (On).

Illustration Y

Start the suction motor and pump.

2. Press the lever for spraying.

Illustration AC

Cleaning solution is sprayed.

3. Turn the power switch to position 0 (Off).

Illustration AG

4. Allow the cleaning solution to act for at least 5 minutes.

5. Turn the power switch to position I (On).

Start the suction motor and pump.

Illustration Y

6. Suck off any residues of the cleaning solution.

If necessary, the air leakage slider can be adjusted to regulate the suction power.

Illustration AA

7. Repeat the process if necessary.
8. After cleaning, clean the upholstery and carpet with clear, warm water and impregnate if desired.

Ending operation

Note

To ensure that no cleaning and dirt particles remain in the lines, carry out a system cleaning (without the addition of detergents) after each application.

1. Turn the power switch to position 0 (Off).

Illustration AG

2. Empty the waste water tank, see chapter *Emptying the waste water tank*.

- Fill the fresh water tank with tap water up to the "MAX" mark, see chapter *Filling the fresh water tank*.
- Connect the spray suction hose to the crevice nozzle.
- Open the tank cap and insert the crevice nozzle completely into the opening.
- Turn the power switch to position 1 (On) and simultaneously press and hold down the spray lever on the handle.

Illustration AI

The rinsing process is finished as soon as the fresh water tank is completely empty.

- Turn the power switch to position 0 (Off).
- Pull the mains plug out of the outlet. Wrap the mains cable completely but not too tightly (loosely) around the cable holder.
- Empty the waste water tank, see chapter *Emptying the waste water tank*.
- Thoroughly rinse the waste water tank with clear water.
- If contaminated, also rinse the fresh water tank with clear water and clean the filter, see chapter *Cleaning the fresh water tank filter*
- Disconnect the accessories from the device.
- To remove any remaining liquid in the spray suction hose:
 - Press the latch and remove the spray suction hose from the device.

Illustration C

- Press the lever on the handle and let the liquid flow out.

Note

To allow the liquid to dry completely, do not wrap the spray/suction hose around the device to dry.

Note

To avoid puddles in the living area (e.g. on carpet, parquet), let the remaining liquid run in a suitable container (e.g. sink, bucket).

- Rinse the washing nozzles with tap water and let the device dry with the other accessories.
- Stow the device in the "drying position" (with the two tank lids slightly open so that any remaining liquid can dry without leaving any residue).

Emptying the waste water tank

- Pull out the dirty water tank vertically upwards by the recessed grip.

Illustration AM

- Unlock the two side ones tank caps, remove the filler cap and dispose of waste water.

Illustration AO

- When continuing the cleaning work: Replace the filler cap, making sure that it is firmly seated. Insert the waste water tank down to the bottom of the device.
- At the end of the cleaning work: Stow the device in the "drying position" (the filler cap is slightly open and any remaining liquid can dry without leaving any residue).

Storing the device

- Attach the spray extraction floor nozzle to the accessory holder on the cable holder.
- Wrap the spray suction hose around the device.
- Attach the handle / hose from the spray suction hose to the accessory holder on the side of the device us-

ing the rubber band. Pay attention to the correct winding direction so that the handle or hose can be attached with the rubber band.

Illustration AW

- Store the device in a dry and frost-proof room.

Transport

⚠ CAUTION

Risk of injury and damage!

Injury or damage due to non-observance of the weight. Be aware of the weight of the device during transport and storage.

Manual transport

- Lift and carry the device by the carrying handle.

Transport in vehicles

- Secure the device against slipping and tipping over.

Care and service

General care instructions

- Clean the device and plastic accessory parts with a commonly available plastic cleaner.
- Rinse the container and accessories with water, as necessary, and dry them before further use.

Cleaning the waste water tank cap and separator

Note

2 grids are fitted to the inside of the waste water tank cover (on the separator). If the grids are wet or dirty, the float may not switch correctly or the device may switch off too early.

Therefore, ensure that the grids are clean and dry during operation.

- Remove the waste water tank from the device, see chapter *Emptying the waste water tank*
- Remove the tank lid from the tank and remove the separator.
- Carefully clean the tank lid and separator with a damp cloth.
- Carefully remove moisture with a dry cloth.

Illustration AQ

- Fit the tank lid and separator together, fasten on the tank and fit them back into the device.

Cleaning the spray nozzle

Note

If the spray jet is uneven, the spray nozzle of the spray extracting accessory can be damaged by residues and will need to be cleaned.

- To clean the spray extraction floor nozzle and spray extraction upholstery nozzle, loosen the nozzle holder by turning it and remove it together with the nozzle.

Note

Keep the O-ring/sealing ring in a safe place and reinsert it after cleaning.

Illustration AU

- Clean residues in the spray nozzle under running water.
- Fit the spray nozzle and sealing ring in the nozzle holder and turn to re-fasten.
- Also clean residues in the spray nozzle of the spray extraction crevice nozzle under running water.

Cleaning the fresh water tank filter

Note

A filter is fitted to the bottom of the fresh water tank, on which dirt particles can settle and thus hinder the water flow. We therefore recommend cleaning the filter regularly.

Note

To clean the filter, the fresh water tank must be empty and removed from the device.

1. Unlock and remove the tank lid, see chapter *Filling the fresh water tank*
2. Rinse the filter thoroughly with water or clean it carefully with a soft brush.

Illustration AS

3. Close the tank lid and make sure that it is firmly seated.

Troubleshooting guide

Poor suction performance

The air damper is open too wide.

- Close the air damper.

Accessory, suction hose or suction tubes are clogged.

- Remove the blockage.

Grids of the waste water tank lid are contaminated or wet.

- Clean/dry grids.

Dirt receptacle not positioned correctly.

- Press the dirt receptacle downwards.

No water emitted from the nozzle

Fresh water tank empty

- Fill up the fresh water tank.

Fresh water filter contaminated.

- Clean the fresh water filter.

Incorrect connection between accessory and spray suction hose.

- Establish the correct connection.

Detergent pump defective.

- Request repair by Customer Service.

Spray jet uneven

Spray nozzle on the accessory for spray extracting cleaning is soiled.

- Clean the spray nozzle on the respective accessory.

Device gets louder and no longer sucks up waste water

Grids of the waste water tank lid are contaminated or wet.

- Clean/dry grids.

Technical data

Electrical connection

Frequency	Hz	50-60
Voltage	V	220-240
Power protection (slow-blowing)	A	10
Nominal power	W	500

Device performance data

Max. fresh water filling quantity	l	1,7
Max. waste water filling quantity	l	2,9
Max. cleaning solution temperature (T in max.)	°C	50

Dimensions and weights

Weight (without accessories)	kg	4,1
Length x width x height	mm	440x230 x260

Determined values in acc. with EN 60704-2-1

Sound pressure level	dB(A)	83
----------------------	-------	----

Subject to technical modifications.



THANK YOU!
MERCI! DANKE! ¡GRACIAS!



Registrieren Sie Ihr Produkt und profitieren Sie von vielen Vorteilen.

Register your product and benefit from many advantages.

Enregistrez votre produit et bénéficiez de nombreux avantages.

Registre su producto y aproveche de muchas ventajas.

www.kaercher.com/welcome



Bewerten Sie Ihr Produkt und sagen Sie uns Ihre Meinung.

Rate your product and tell us your opinion.

Évaluer votre produit et dites-nous votre opinion.

Reseñe su producto y díganos su opinión.



www.kaercher.com/dealersearch

Alfred Kärcher SE & Co. KG

Alfred-Kärcher-Str. 28-40

71364 Winnenden (Germany)

